

# VECTUS<sup>®</sup>

Powered by **wavin**



*India ki  
Waterline!*

## PREMIUM SWR DRAINAGE SYSTEM



**HSN CODE : 3917**

For Soil, Waste & Rainwater



# PREMIUM SWR DRAINAGE SYSTEM

Vectus Premium SWR Drainage System consists of a wide range of soil, waste and rain water plumbing products for residential and industrial developments. The system is available in Ring-Fit and Self-Fit options, wherein the pipes are manufactured as per IS 13592 and fittings are as per IS 14735. Vectus Premium SWR pipes and fittings are available from 75 mm to 160 mm.

The pipes are available in two types:

- Type A - Used for ventilation pipe work and rainwater harvesting.
- Type B - Used for soil and waste discharge systems.

## Features



Lightweight



UV Resistant



Leakage Free Joint



Yellow Ring for Fast Installation

## Applications



Offices



Residential Purpose



Industrial Use



Hospitals



Sewage & Waste Water Lines



Rainwater Drainage



Self Fit



Ring Fit

### Features of Self fit :

- High flow rate - no choking
- High degree of dimensional accuracy
- Quick and convenient installation
- Cost effective

### Features of Ring fit :

- Uniform size of grooves in fittings with inbuilt collapsible ring fit design mould
- The ring is in-built, hence, tough to remove
- Easy jointing of the pipe and fittings
- Long lasting ring ensures leakage free joints

## PREMIUM SWR FITTINGS - RING FIT (Manufactured as per IS 14735)

### SWR PIPES



75 90 110 160

### Bend 45°



75 90 110 160

### Coupler



75 90\* 110 160

### Bend 87.5°



75 90 110 160

### Door bend 87.5°



75 90 110 160

### Single Tee



75 90 110 160

### Door Tee



75 90 110 160

### Swept Tee



75 110

### Swept Tee with Door



75 110

All the asterisk (\*) marked fittings are in economy range.  
All sizes are in mm.

## PREMIUM SWR FITTINGS - RING FIT

(Manufactured as per IS 14735)

**Cross Tee Plain**



75 110

**Cross Tee With Door**



75 110

**Reducing Tee**



110x75 110x90\* 160x110

**Reducing Door Tee**



110x75 160x110

**Single Y**



75 90 110 160

**Single Y with Door**



75 90 110 160

**Reducing Y**



110x75 160x110

**Reducing Y with Door**



110x75 160x110

**Reverse Y**



75

**Reverse Y with Door**



75

**Double Y Plain**



75 110

**Double Y with Door**



75 110

**Cleaning Pipe**



75 90 110 160

**Reducer**



110x75 160x110

**Yellow Rubber Ring**



75 90 110 160

**Rubber Lubricant**



50 gms 100 gms 250 gms  
500 gms 1000 gms

All the asterisk (\*) marked fittings are in economy range.  
All sizes are in mm.

## PREMIUM SWR FITTINGS - SELF FIT

(Manufactured as per IS 14735)

**Bend 45°**



75 90\* 110 160

**Coupler**



75 90 110 160

**Bend 87.5°**



75 90 110 160

**Door Bend 87.5°**



75 90 110 160

**Single Tee**



75 90 110 160

**Door Tee**



75 90 110 160

**Single Y**



75 90 110\* 160

**Single Y with Door**



90 90\* 160

**Cross Tee plain**



75 110

**Cross Tee with door**



75 110

**Double Y Plain**



75 110

**Double Y with Door**



75 110

**Reducing Y**



110x75 160x110

**Reducing Y With Door**



110x75 160x110

**Reverse Y**



75\*\*

**Reverse Y with Door**



75

**N Trap Without Jali**



110x63\* 110x75 110x90\*  
110x110\*

**N Trap With Jali**



110x63\* 110x75 110x90\*  
110x110\*

**P Trap Small**



110x110 125x110\*

**P Trap Small (with Lip Ring)**



110x110\* 125x110\*

## PREMIUM SWR FITTINGS - SELF FIT

(Manufactured as per IS 14735)

**S Trap**



110x110\* 125x110\*

**P Trap with Lip Ring**



110x110 125x110\*

**Socket plug**



75\* 110\*

**Q Trap**



110x110\* 125x110\*

**Door Cap**



75\* 90\* 110\*

**Vent Cowl**



75 90 110 160

**Reducing Tee**



110x75 160x110

**Pipe Clip**



75\* 110\*

**Reducing Door Tee**



110x75 160x110\*\*

**Cleaning Pipe**



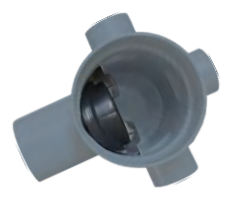
75 90 110

**Multi Floor Trap (4" Depth)**



110x75x50\*

**Multi Floor Trap (7" Depth)**



110x75x40\*

**Swept Tee**



75 110

**Swept Tee with Door**



75 110

**Balcony Trap**



110x63\*

**Reducer**



110x75\* 160x110\*

**Lip Ring**



110x110 110x125

**PVC Solvent Cement**



100 ml 250 ml 500 ml  
1000 ml

**Round Jali**



110

(\*) Given sizes are available in both ISI & economy range.  
All the asterisk (\*) marked fittings are in economy range.  
All sizes are in mm.

\*\*MTO - Make to Order items will be manufactured against the customer orders only.

## OUR SALES & SUPPORT NETWORK

