

VECTUS[®]

Powered by **WAVIN**

*India ki
Waterline!*

AGRI PIPING SYSTEM



Agri Piping System

Vectus Pressure Plus pipes (Agri Pipes) are manufactured using high quality uPVC material, which is achieved by unplasticizing PVC material to get more strength and stiffness. This material has the ability to stabilize the UV radiation and also has high resistance against corrosion, all of which makes these pipes ideal for use in agricultural or any outdoor operations. These pipes are produced with plain socket and suitable for solvent cement jointing.









Vectus Pressure Plus pipes are manufactured in accordance with IS 4985 standard, covering range from 20 mm to 250 mm in pressure ratings of 2.5, 4, 6, 10 & 15 Kg/cm². The moulded fittings are manufactured as per IS 7834 standard and the fabricated fittings as per IS 10124.











Vectus Pressure Plus Pipes are manufactured as per IS 4985 & varies from 20mm to 250mm.

Size (mm)	(20 ft.) 2.5 Kg/cm ²	(20 ft.) 4 Kg/cm ²	(20 ft.) 6 Kg/cm ²	(20 ft.) 10 Kg/cm ²	(20 ft.) 15 Kg/cm ²
20	-	-	-	**	-
25	-	-	-	-	-
32	-	-	-	-	-
40	-	-	-	-	-
50	-	-	-	**	-
63	-	-	-	-	-
75	-	-	-	**	-
90	-	-	-	-	-
110	-	-	-	**	-
125	-	**	-	**	-
140	-	-	-	-	-
160	-	-	-	**	-
180	-	-	-	-	-
200	-	-	-	-	-
225	-	-	-	-	-
250	**	-	-	-	-

Features

 Lightweight yet Strong & Durable	 UV Resistant	 High Strength	 Smooth Bore
 Solvent Cement Jointing	 Easy Installation	 Corrosion Resistant	 Ideal for aggressive environment

Applications

 Industrial Mining	 Industrial Use	 Drinking Water Distribution	 Sprinkler Lines
 Cable Ducting	 Ventilation Pipe Line	 Irrigation	 Suitable for Sandy & Saline Water

Elbow
(2.5 Kg/cm² Pressure)



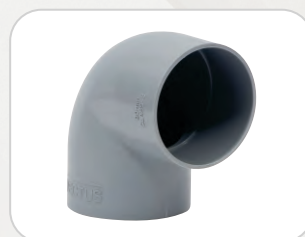
63 75 90 110

Elbow
(4 Kg/cm² Pressure)



40 50 63 75 90 110 140 200

Elbow
(6 Kg/cm² Pressure)



40* 50* 63* 75*
90* 110* 160

Elbow
(10 Kg/cm² Pressure)



90

• All the (*) asterisk marked fittings are as per IS Standards.
• **MTO - Make to Order items will be manufactured against the customer orders only. • All sizes are in mm.

Tee
(2.5 Kg/cm² Pressure)



63 75 90 110

Tee
(4 Kg/cm² Pressure)



63 75 90 110 140 200

Tee
(6 Kg/cm² Pressure)



40* 50* 63* 75*
90* 110* 160*

Tee
(10 Kg/cm² Pressure)



90*

Coupler
(4 Kg/cm² Pressure)



75 90 110

Coupler
(6 Kg/cm² Pressure)



40 50

Coupler Fabricated
(4 Kg/cm² Pressure)



63 75 90 110 125**
140 160 180 200

Coupler Fabricated
(6 Kg/cm² Pressure)



40 50 63 75 90 110 125
140 160 180 200 250

End Cap



63 75 90 110 160

Reducing Bush



140x110

Male Threaded Adapter - MTA



63 75 90 110

Female Threaded Adapter - FTA



40 63 75 90 110

Saddle



63x20 63x25 75x20 75x25
90x20 90x25 110x25

Reducing Tee
(4 Kg/cm² Pressure)



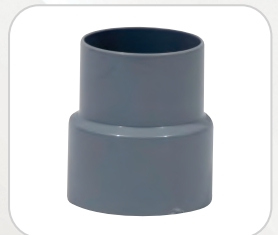
110x63 110x75 110x90
160x90 160x110 200x160

Reducing Tee
(6 Kg/cm² Pressure)



110x75 110x90

Reducer Coupler
(4 Kg/cm² Pressure)



75x63 90x63 110x50
110x63 110x75 110x90 140x110
160x90 160x110 160x140 200x160

Reducer Coupler
(6 Kg/cm² Pressure)



110x50 110x63
110x75 110x90

Reducer Elbow
(4 Kg/cm² Pressure)



110x90

Reducer Elbow
(6 Kg/cm² Pressure)



110x63 110x75 110x90

Female Threaded Brass Adapter - FTBA



25x1/2"

Female Threaded Brass Elbow - FTBE



25x1/2"

Female Threaded Brass Tee - FTBT



25x1/2"

OUR SALES & SUPPORT NETWORK

